

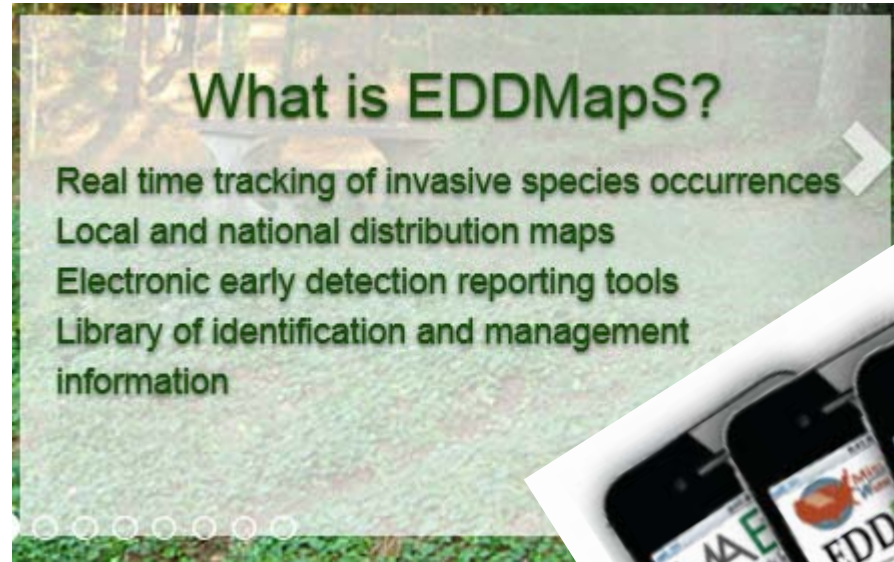
# Sagebrush Ecosystem Council Update



Nevada Department  
of Agriculture

# Program Updates

- EDDMaps Update
- NDA – IPM/Sage-Grouse Projects
- NDA Range Monitoring App



# EDDMaps = online database and tool for invasive plant management and more

[www.eddmaps.org](http://www.eddmaps.org)

Online, public invasive plant database website

- Make invasive plant reports
- Set email alert for your area
- Track your plant records
- Make basic distribution maps of invasive plant species throughout the U.S.

## EDDMapsWEST App

Smartphone application to make weed reports

- Report invasive plant on the fly with picture attached
- Have species information available all the time
- Reports go directly to NDA for verification

## Nevada EDDMaps GIS

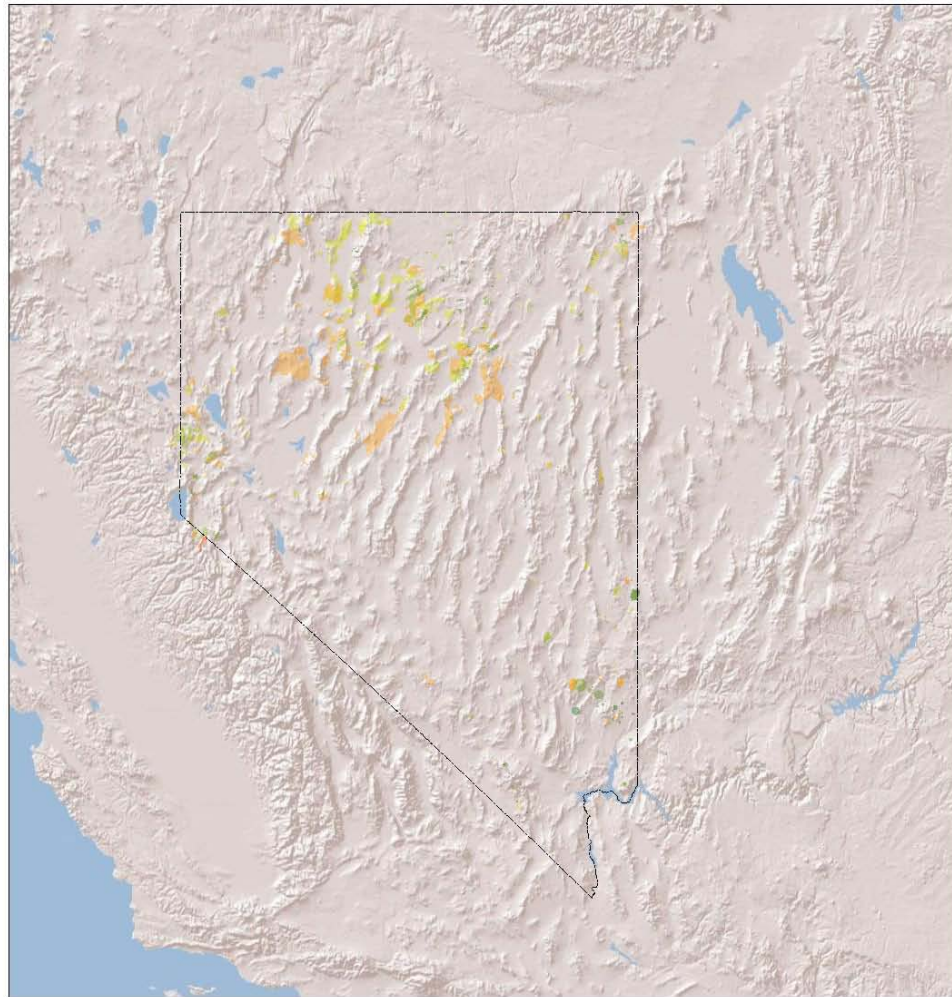
Online, *non-public*, invasive plant database and management tool

- Custom developed by NDA
- Permitted log in access only
- Links with all public invasive plant data in real time
- Includes other relevant data layers to overall rangeland health
- Make professional style, specific maps

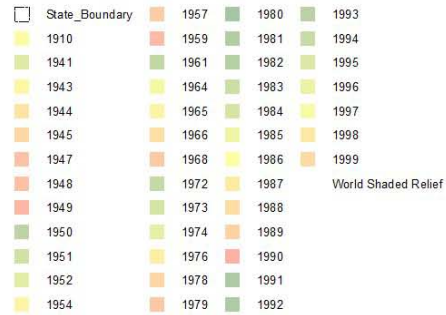
# Nevada EDDMaps GIS

- Developed in partnership with NDA, MIA Consulting and EDDMaps (University of Georgia), funded by USFS through NDA.
- Released to NDA after initial completion August 2014
- Use and access managed by NDA; all data changes managed by NDA
- Not accessible without permitted EDDMaps log-in (controlled by NDA) and Microsoft Silverlight download
- Use Policy and User Application developed September/October 2014
- **USEFUL CAPABILITIES:**
  - Easy use for those that do not have GIS or ArcMap experience
  - Overlay relevant data – fires, invasion susceptibility, weeds, project area, treatment data
  - Bring in already published datasets on top of included layers

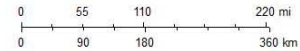
# Fires 1910 - 1999



September 24, 2014

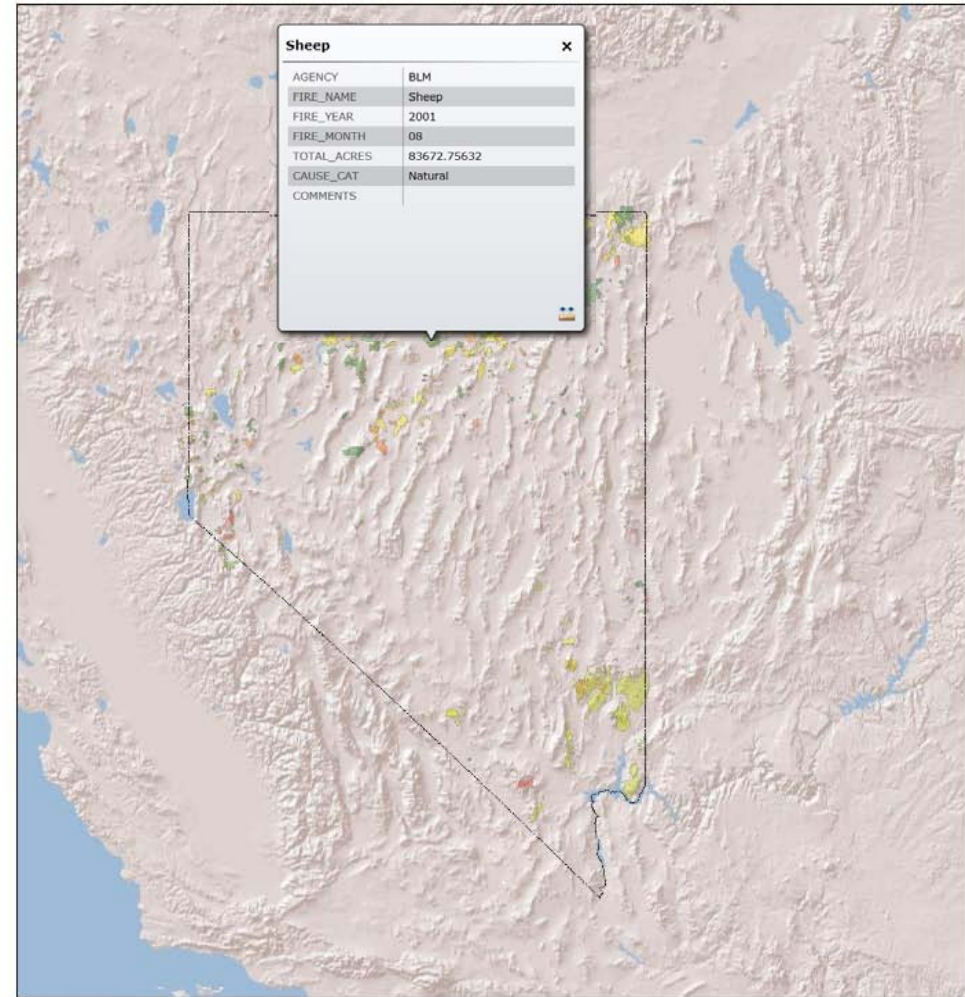


1:4,976,771



Copyright © 2014 Esri

# Fires 2000 - 2013

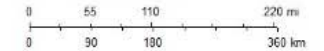


Sheep	
AGENCY	BLM
FIRE_NAME	Sheep
FIRE_YEAR	2001
FIRE_MONTH	08
TOTAL_ACRES	83672.75632
CAUSE_CAT	Natural
COMMENTS	

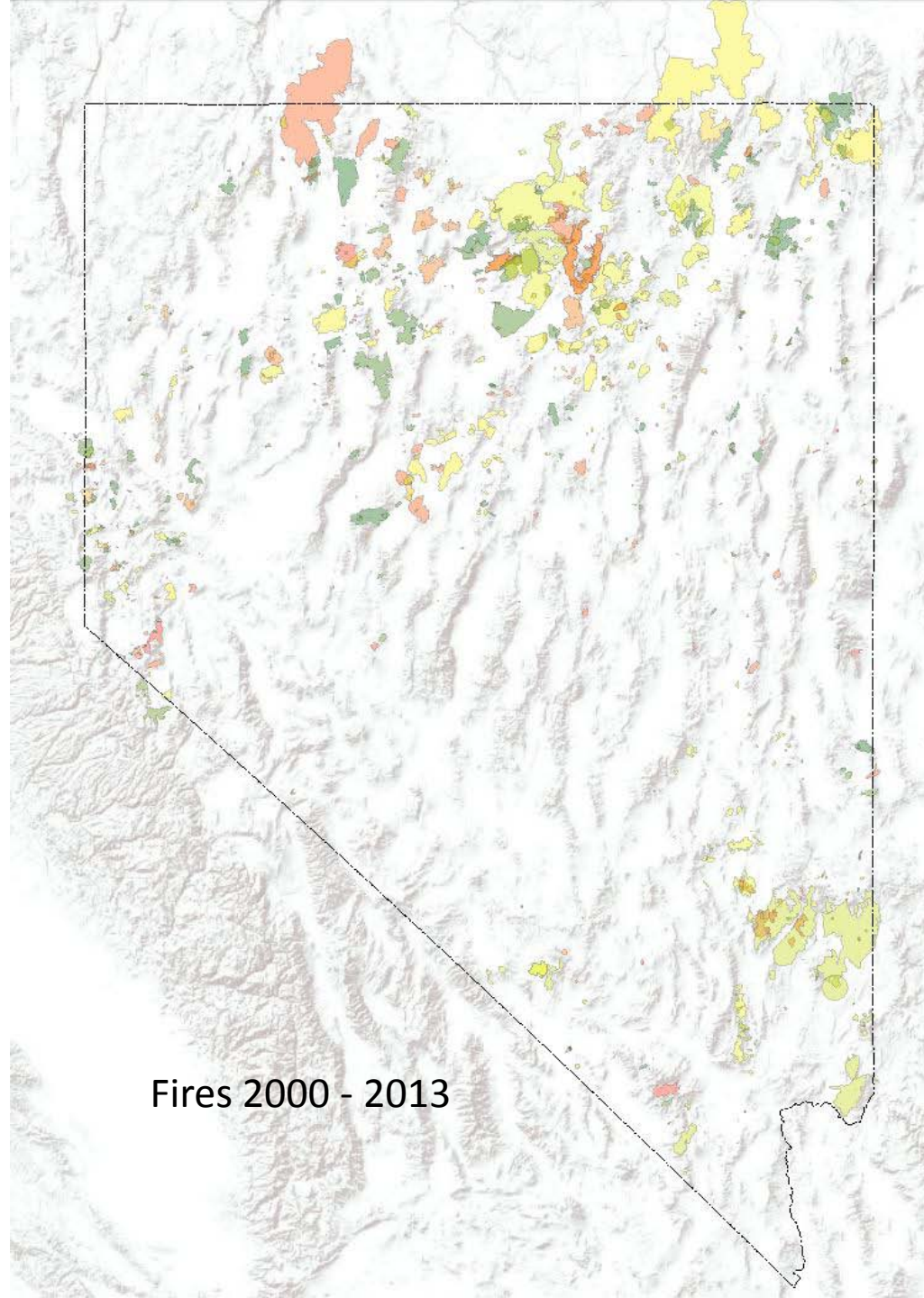
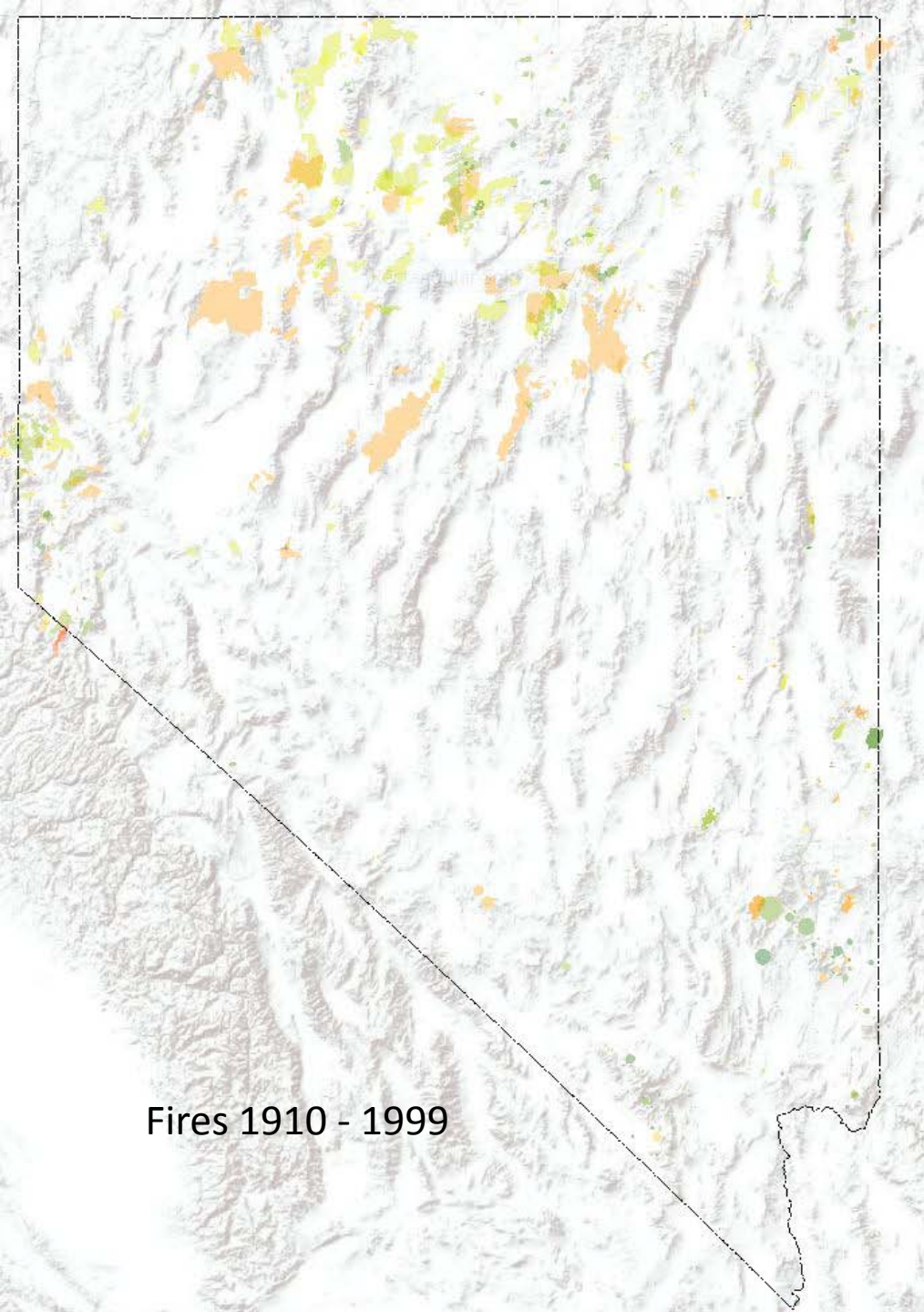
September 24, 2014



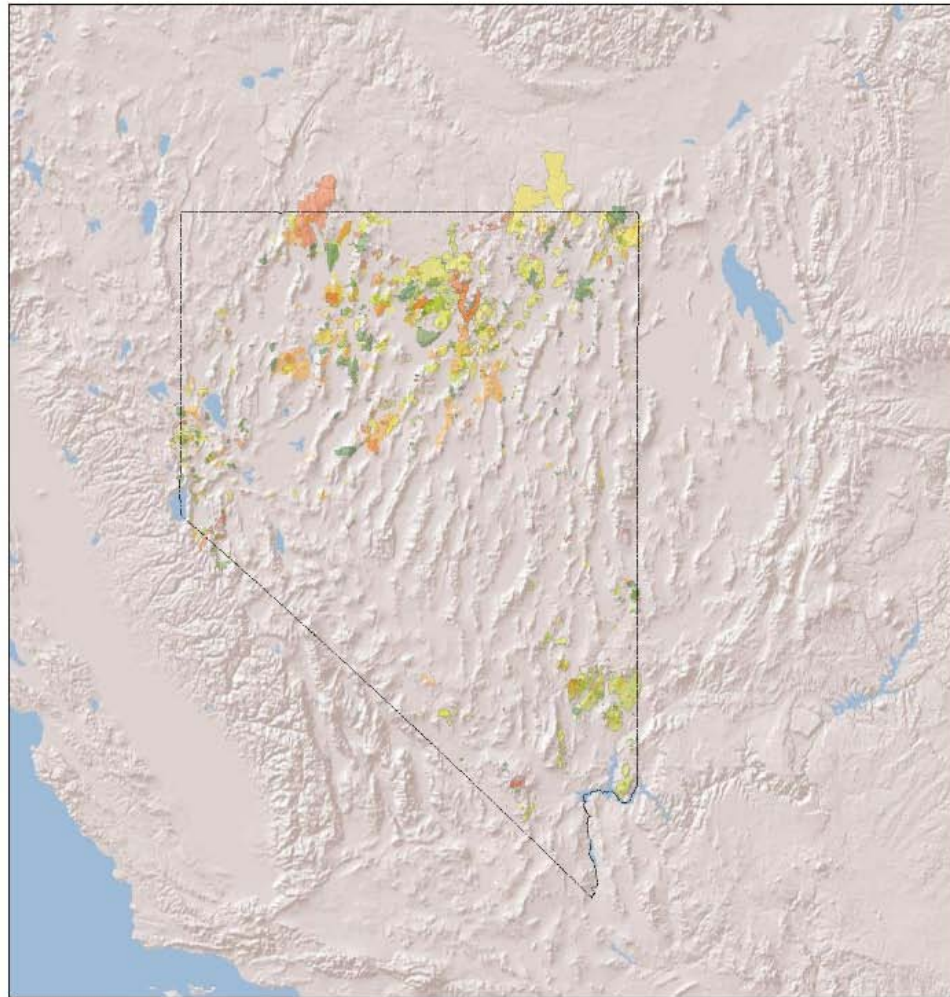
1:4,976,771



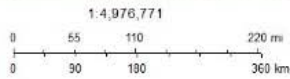
Copyright © 2014 Esri



Fires 1910 - 2013



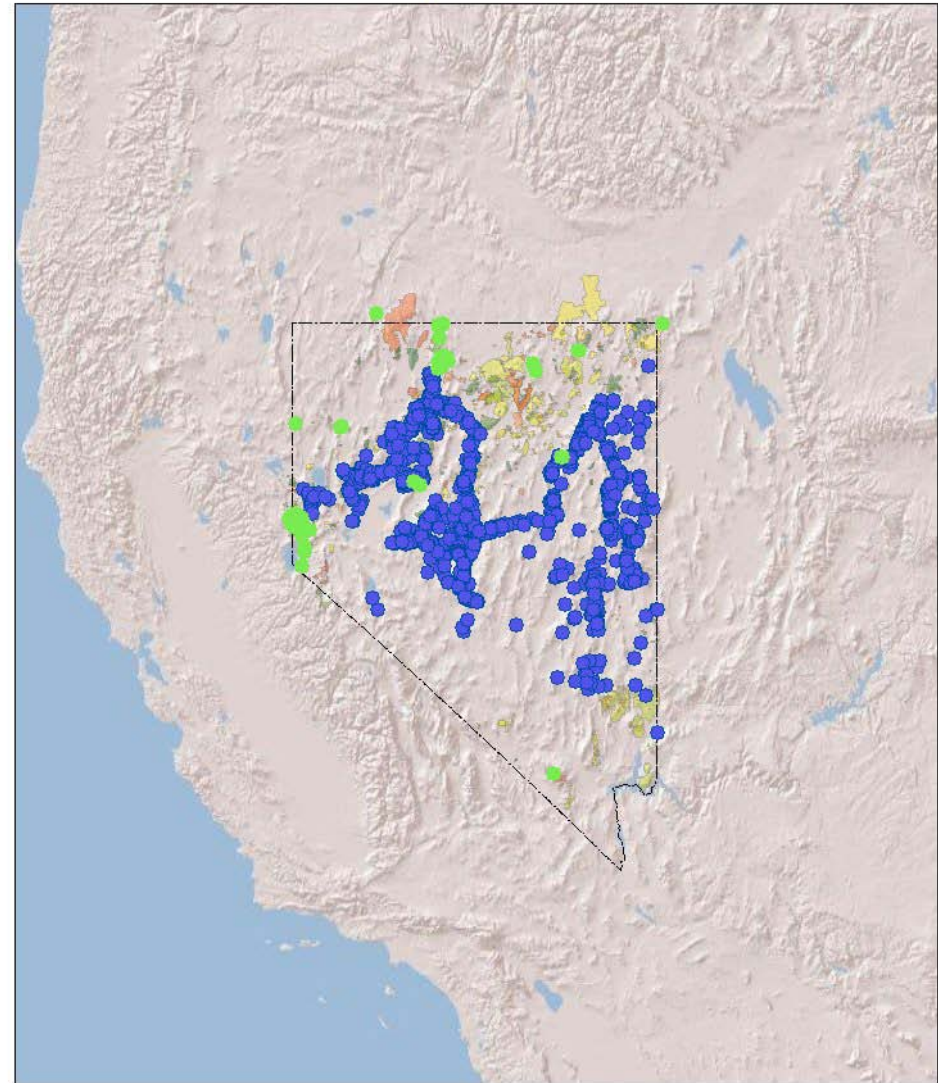
September 24, 2014



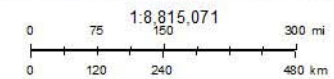
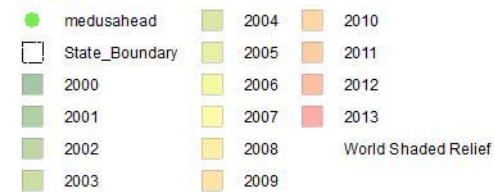
Copyright © 2014 Esri

Sources: USGS, FAO, NPS, EPA, ESRI, DeLorme, TANA, and other suppliers  
Department of Agriculture

Cheatgrass/Medusahead Reports in Fire Boundaries 2000 - 2013



September 24, 2014

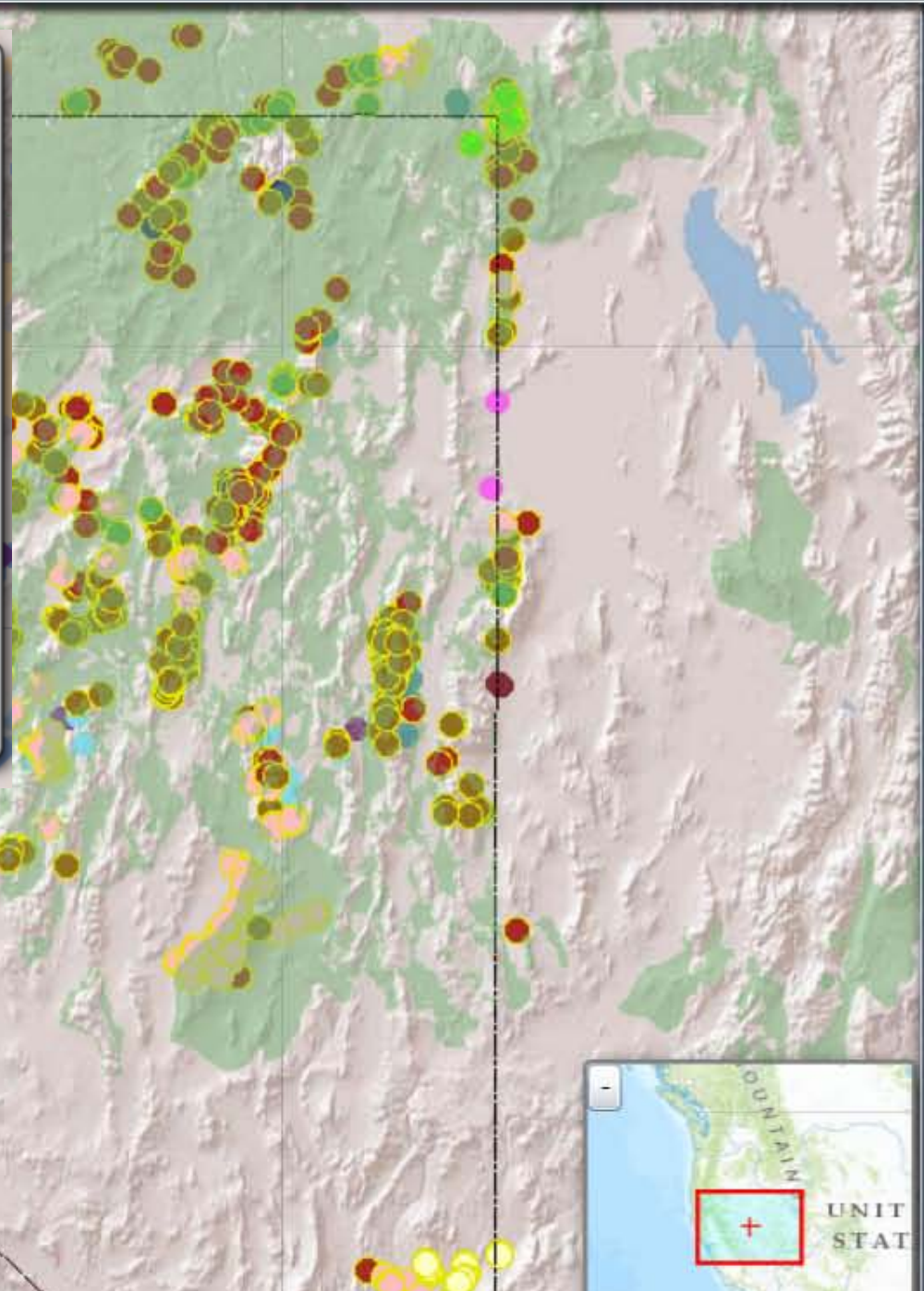
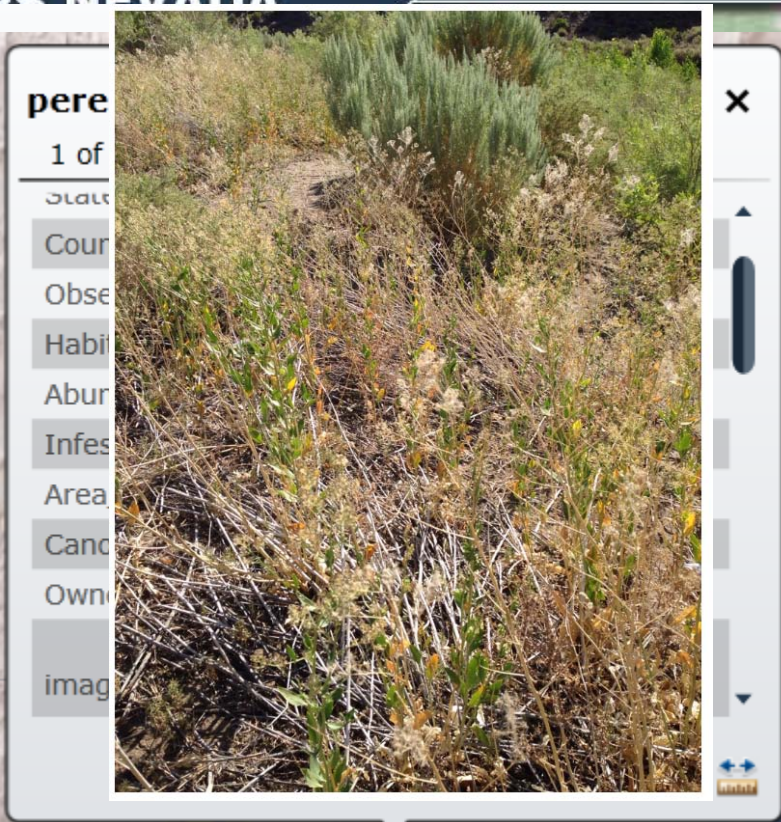


Copyright © 2014 Esri

Sources: USGS, FAO, NPS, EPA, ESRI, DeLorme, TANA, and other suppliers  
Department of Agriculture

musk  
2 of 1  
Report  
Report  
State\_  
Count  
Obser  
Habit  
Abund  
Infest  
Area\_  
Canon

per  
1 of  
Cour  
Obse  
Habi  
Abur  
Infes  
Area  
Cand  
Own  
imag



Map Contents

- PPHPGH\_Final
- HistoricSageGr
- ▶ Historic Distribu
- All Noxious We
- Herbicide Appli
- Weed Polygons
- Nevada Weeds
- ▶  Weeds
  - Weed Cat
  - Dalma
  - Dyer's
  - Eurasi
  - Malta
  - Medite
  - black
  - camel
  - crims
  - giant
  - hound
  - purple
  - rush s

USGS – Greater Sage-grouse Preliminary Habitat and Primary General Habitat

[http://tiles.arcgis.com/tiles/4OV0eRKiLAYkbH2J/arcgis/rest/services/PPHPGH\\_Final\\_Cached/MapServer](http://tiles.arcgis.com/tiles/4OV0eRKiLAYkbH2J/arcgis/rest/services/PPHPGH_Final_Cached/MapServer)

Map navigation controls including zoom in (+), zoom out (-), home, and north arrow.





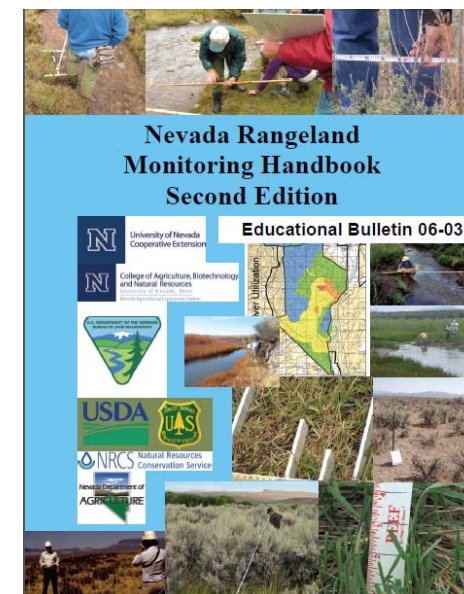
# Invasive Plant Management to benefit sage-grouse and Nevada rangelands

5 proposals selected for award

- Smith Valley Conservation District - \$18,500
  - Medusahead fall treatment in Nov.
- Eastern Nevada Landscape Coalition - \$15,000
  - Noxious Weed Treatments – Project Site Visit Mid-October
- Paradise/Sonoma Conservation District - \$20,000
  - Medusahead fall treatment in Nov.
- Humboldt Watershed CWMA - \$21,500
  - Noxious Weed Treatment – EDRR Species & Revegetation
- Dayton Valley Conservation District - \$10,000 - Project NOT funded after site verification meeting scheduled.

# Rangeland Monitoring APP

- Landowner focused
- EDDMaps Ease of Use Platform
  - Range Monitoring App
  - Project Reporting App
- Roll Out April 2015
- Based on UNCE – Nevada Rangeland Monitoring Handbook & Ranchers Monitoring Guide



# Current Program Challenges

- EDDMaps
  - BLM Data Upload – still not complete
- Projects
  - NEPA not complete for some areas
  - Limited Funding
- Monitoring
  - APP Development Underway
  - Phase I fully funded, need Phase II funding
  - Spring Workshops for Landowners in development



Tina Mudd  
Rangeland Health Program Manager  
Nevada Department of Agriculture  
401 S. 21<sup>st</sup> Street  
Sparks, NV 89430

(775) 353-3639

[tmudd@agri.nv.gov](mailto:tmudd@agri.nv.gov)